

# ARDEN P.U.D. PLAT 1

BEING A PARCEL OF LAND, LYING IN SECTIONS 21, 22, 27, 28, 33 AND 34,  
TOWNSHIP 43 SOUTH, RANGE 40 EAST, PALM BEACH COUNTY, FLORIDA.

SHEET 5 OF 20

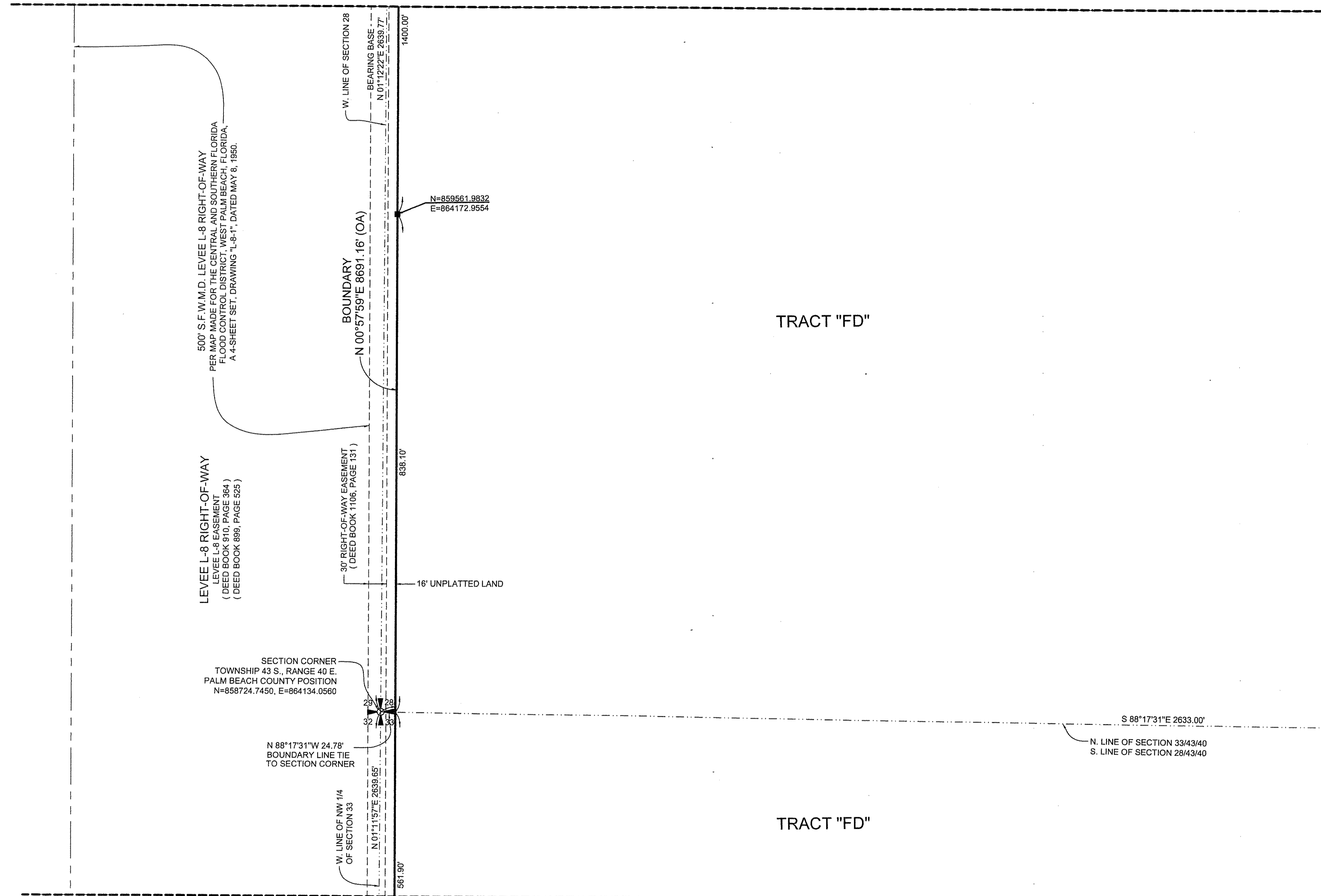
36

COUNTY OF PALM BEACH )  
STATE OF FLORIDA ) SS

THIS PLAT WAS FILED FOR RECORD AT  
M. THIS DAY OF  
2016, AND DULY  
RECORDED IN PLAT BOOK NO. \_\_\_\_\_  
ON PAGE \_\_\_\_\_ THRU \_\_\_\_\_

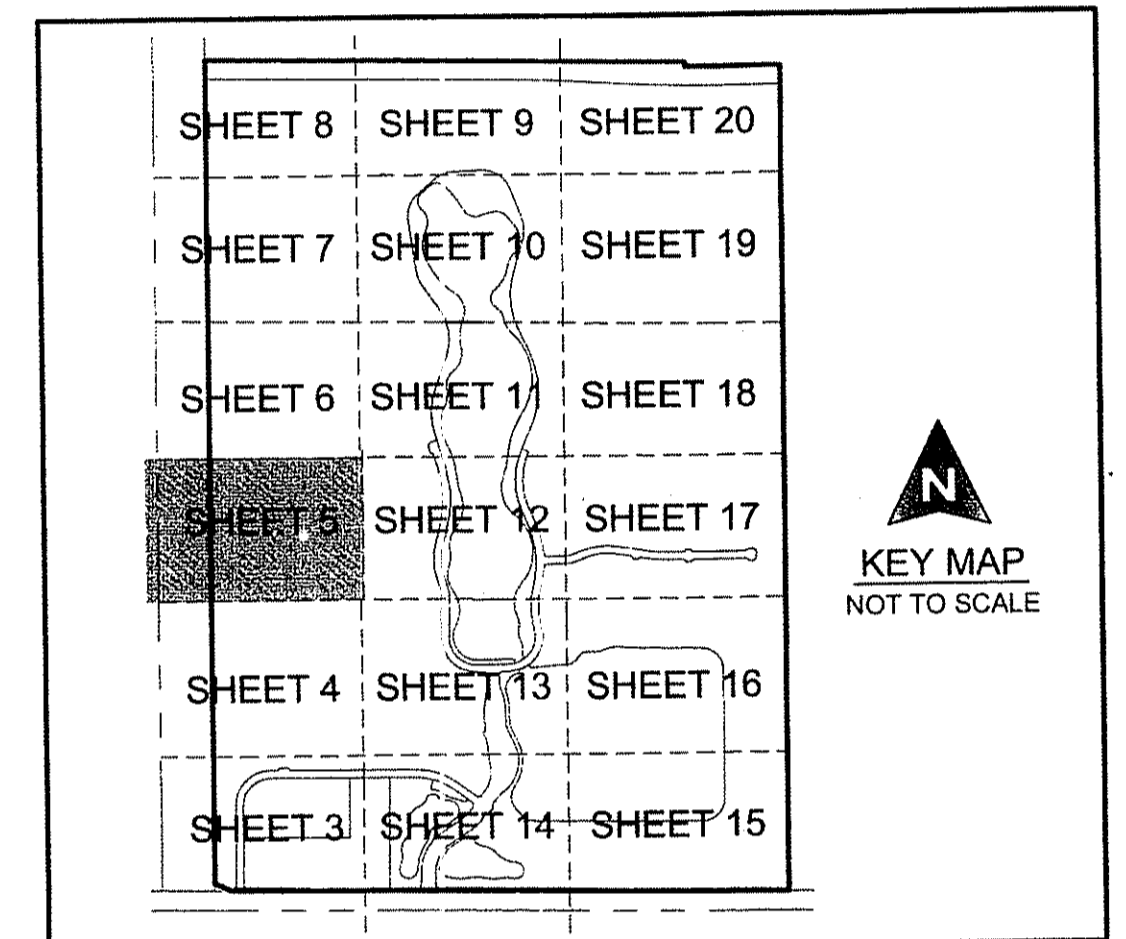
SHARON R. BOCK,  
CLERK AND COMPTROLLER  
BY: \_\_\_\_\_, D.C.

MATCH TO SHEET 6

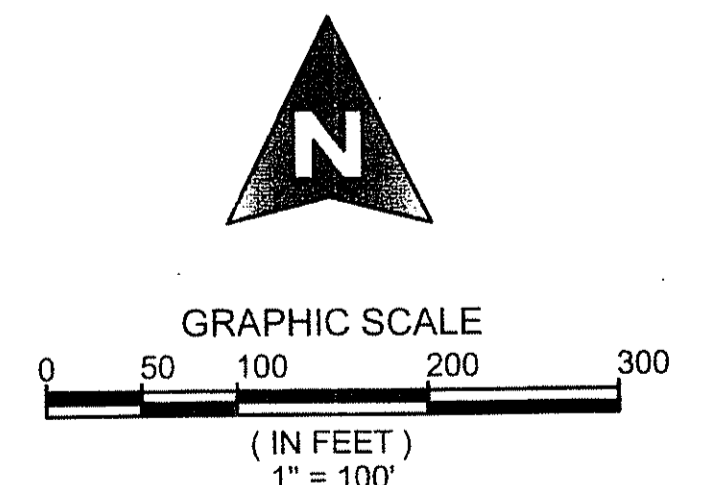


MATCH TO SHEET 12

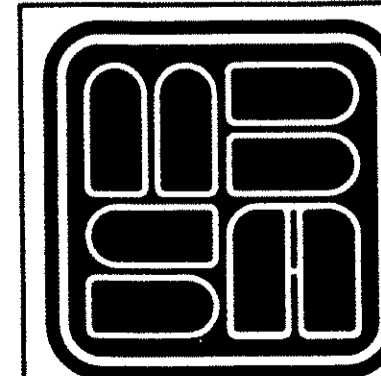
MATCH TO SHEET 4



COORDINATE NOTE:  
STATE PLANE COORDINATES SHOWN ARE GRID DATUM, NAD 83 1990  
ADJUSTMENT, FLORIDA EAST ZONE, COORDINATE SYSTEM 1983 STATE  
PLANE, TRANSVERSE MERCATOR PROJECTION  
LINEAR UNIT = US SURVEY FEET  
ALL DISTANCES ARE GROUND  
SCALE FACTOR = 0.99998219  
GROUND DISTANCE X SCALE FACTOR = GRID DISTANCE  
BEARINGS AS SHOWN HEREON ARE GRID DATUM, NAD 83 1990  
ADJUSTMENT, FLORIDA EAST ZONE.



SHEET 5 OF 20



**MICHAEL B. SCHORAH  
& ASSOCIATES, INC.**  
1850 FOREST HILL BLVD., SUITE 206  
WEST PALM BEACH, FLORIDA 33406  
EB# 2438 TEL. (561) 968-0080 FAX. (561) 642-9726 LB# 2438

## ARDEN P.U.D. PLAT 1